



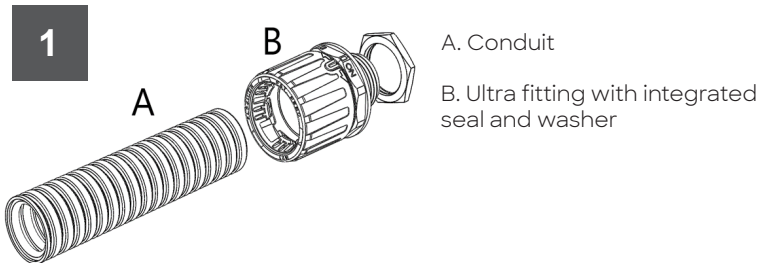
WATCH
THE VIDEO

Flexicon FPAU (ULTRA) - Short Thread Fitting Instructions FM0301-1

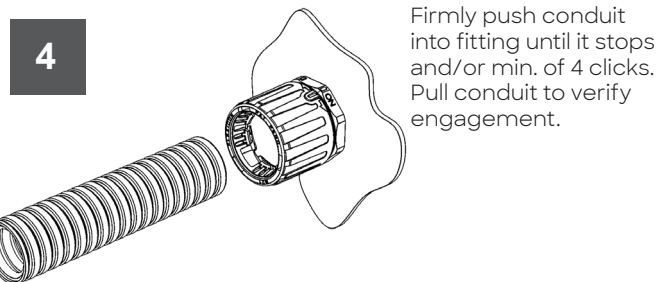
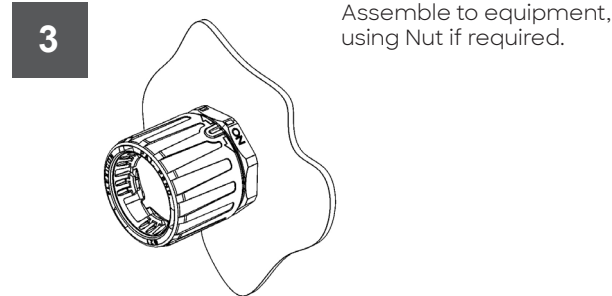
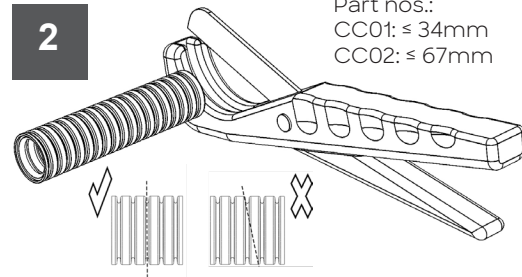


Instructions for assembling/removing fitting to/from conduit to ensure IP66, IP67, IP68 & IP69 is maintained. Refer to Flexicon catalogue in Ultra section for all available fitting types and sizes.

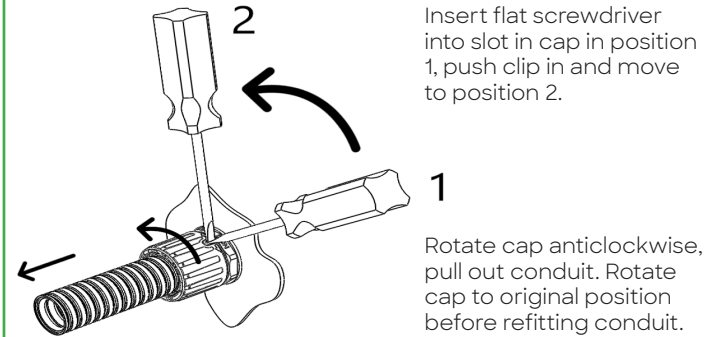
Safety Note: When handling cutters, knives, saws, pointed tools etc, suitable eye and hand protection should always be worn.



Cut end straight with Flexicon cutter
Part nos.:
CC01: ≤ 34mm
CC02: ≤ 67mm

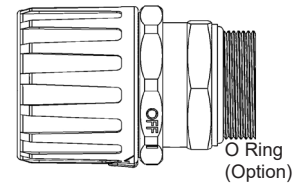
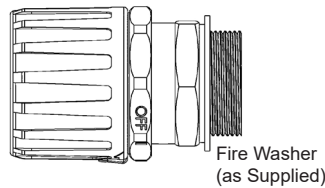


To remove conduit:



IMPORTANT NOTE: ALTERNATE SEALING

Product is supplied with fibre washer fitted for use with smooth mounting surfaces. For use with textured (i.e. cast) surfaces, fibre washer should be removed and replaced with O ring supplied in separate bag in pack. The O-ring option requires a suitably sized hole with small chamfer on the hole/threaded entry to create a good seal.



Installation Torque Values

Tightening torque for METAL thread fittings and supplied fibre washer or optional O ring (Nickel plated brass or stainless steel locknuts are available separately-see table below for ordering code).

Thread Size	Locknut (Nm)		Housing Hole Dia +0.5/-0mm	Threaded Entry (Nm)		Optional Locknut	
	Min	Max		Min	Max	Plated Brass	St. Steel
M16	17	27	16	22	36	B-M16	SS-M16
M20	22	32	20	28	45	B-M20	SS-M20
M25	22	32	25	33	54	B-M25	SS-M25
M32	28	36	32	39	54	B-M32	SS-M32
M40	55	72	40	55	72	B-M40	SS-M40
M50	66	81	50	66	81	B-M50	SS-M50

