



WATCH
THE VIDEO

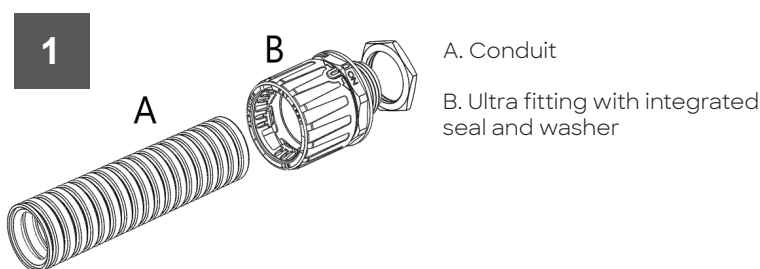
Atkore
Flexicon

Flexicon FPAU (ULTRA) - ST Fitting Instructions FM0301-1

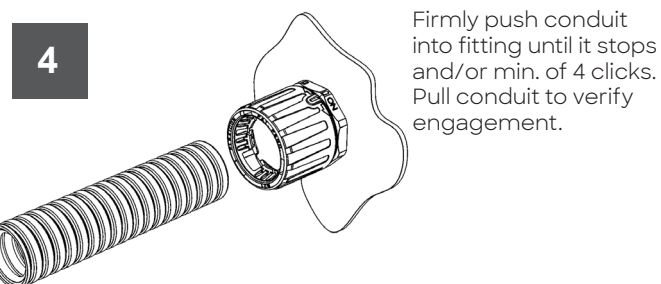
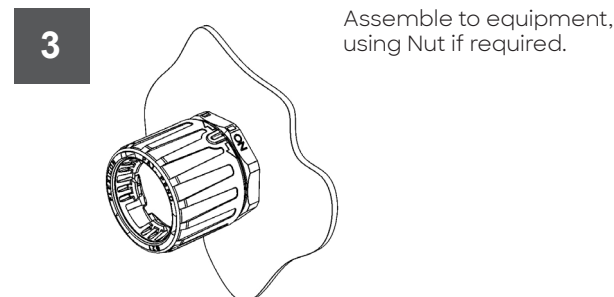
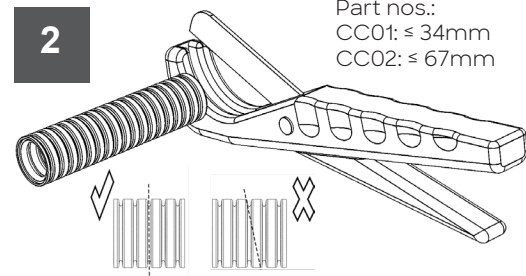


Instructions for assembling/removing fitting to/from conduit to ensure IP66, IP67, IP68 & IP69 is maintained. Refer to Flexicon catalogue in Ultra section for all available fitting types and sizes.

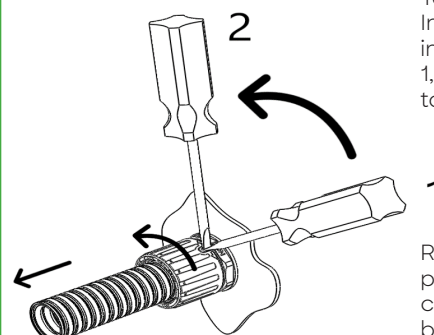
Safety Note: When handling cutters, knives, saws, pointed tools etc, suitable eye and hand protection should always be worn.



Cut end straight with Flexicon cutter
Part nos.:
CC01: ≤ 34mm
CC02: ≤ 67mm



To remove conduit:

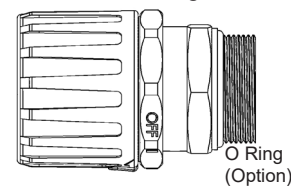
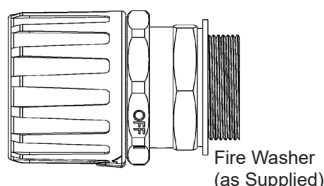


To remove conduit:
Insert flat screwdriver into slot in cap in position 1, push clip in and move to position 2.

Rotate cap anticlockwise, pull out conduit. Rotate cap to original position before refitting conduit.

IMPORTANT NOTE: ALTERNATE SEALING

Product is supplied with fibre washer fitted for use with smooth mounting surfaces. For use with textured (i.e. cast) surfaces, fibre washer should be removed and replaced with O ring supplied in separate bag in pack. The O-ring option requires a suitably sized hole with small chamfer on the hole/threaded entry to create a good seal.



Installation Torque Values

Tightening torque for METAL thread fittings and supplied fibre washer or optional O ring (Nickel plated brass or stainless steel locknuts are available separately-see table below for ordering code).

Thread Size	Locknut (Nm)		Housing Hole Dia +0.5/-0mm	Threaded Entry (Nm)		Optional Locknut	
	Min	Max		Min	Max	Plated Brass	St.Steel
M16	17	27	16	22	36	B-M16	SS-M16
M20	22	32	20	28	45	B-M20	SS-M20
M25	22	32	25	33	54	B-M25	SS-M25
M32	28	36	32	39	54	B-M32	SS-M32
M40	55	72	40	55	72	B-M40	SS-M40
M50	66	81	50	66	81	B-M50	SS-M50



For more info visit www.flexicon.uk.com



©2020 Flexicon Ltd. All rights reserved.